

SWEET HOME

WITH ORIGINAL VARIATIONS

IN THE KEY OF G. MAJOR. AMERICAN
MODE.
COMPOSED FOR THE GUITAR.

BY

J. C. SMITH (ART)

GUITAR. ————— © ————— GUITAR.

SWFET HOME. IN G. S. VARIATIONS. 60	THE AMERICAN WEDDING MARCHING. 35
PAVAN OF THE MIDNIGHT STARS. TRIO. 75	AU REVOIR POLKA. IN A. D. G. C & A. MIN. 40
RAINBOWS OF GOLD. IN F. TRIO. 75	DIANA'S FANTASIA. IN G. DUET. 50
SAPPHO'S REVERIE. IN E. 30	THE AMERICAN FANTASIA IN E. 100
GREENVILLE VARIATIONS. IN E. DUO. 75	THE SPANISH HARMONIC DANCE. IN G. 30
TRYPHENA WALTZ. IN C. DUET. 40	THE SILVER WAVE POLKA. IN A & E. 35
DANCE OF THE FAIRIES. IN A. 30	LIGHTNING POLKA. IN C & A. MIN. DUO. 50
THE CELEBRATED HARMONIC WALTZ. D. 35	STORM KING POLKA. IN G & E MINOR. 30
THE STORM CLOUD WALTZ. IN G. 80	FREDRICK SCHOTTISCHE. IN G. 30
POSITION WALTZ. IN A. DUET. 40	ROSA LEE VARIATIONS. IN G. 30
TROUBADOUR'S RETURN. IN E. 50	ALPHONSINE WALTZ. IN G. 30
HIPPOCAMPI MARCH. IN C. 30	NELLIE QUICKSTEP. IN D. 30
GRAND OPERA MARCH IN G. 50	VALPARAISO WALTZ. IN A. 25
TROUBADOURIAN SERENADE IN E. 30	ASSYRIANNA DUET. WALTZ. IN A. 40
LOVE'S DREAM WALTZ. IN D & A. 25	SWEET HOME. IN C. 30
ARCADOME COTILLION. IN A. 30	TRYPHENA POLKA. IN D & B. MIN. 30



THE AMERICAN GUITARIST.



SWEET HOME VARIATIONS. AMERICAN MODE.
CONTINUED.

TUNE THUS
VARIATIONS COMPOSED BY

J.C. SMITH.

First line of musical notation, including a treble clef, a key signature of one sharp (F#), and a 7/8 time signature. The melody begins with a quarter note G4, followed by eighth notes A4 and B4. The bass line starts with a whole note chord of D4, G4, and B3. The notation includes various fingerings and a repeat sign.

HAR. 12. FRET.

Second line of musical notation, continuing the melody and bass line with various chords and rhythmic patterns.

Third line of musical notation, featuring more complex chordal textures and melodic runs.

Fourth line of musical notation, showing a series of chords and a melodic line with some triplets.

Fifth line of musical notation, including a sixteenth-note triplet and a sixteenth-note sextuplet.

Sixth line of musical notation, concluding the piece with a final melodic phrase and bass accompaniment.

THE AMERICAN GUITARIST.

SWEET HOME VARIATIONS. AMERICAN MODE.

CONTINUED.

First musical staff, featuring a treble clef and a key signature of one sharp (F#). The staff contains a sequence of notes with various fingerings (1, 2, 3, 4) and a sixteenth-note triplet marked with a '6' above it. The bass line consists of simple chords and single notes.

Second musical staff, continuing the melody with more triplet markings and fingerings. The bass line remains simple, supporting the melodic line.

Third musical staff, showing a variety of rhythmic patterns and fingerings. The bass line continues to provide harmonic support.

Fourth musical staff, featuring a series of sixteenth-note triplets marked with numbers 6 through 11 above them. The bass line includes some more complex chordal structures.

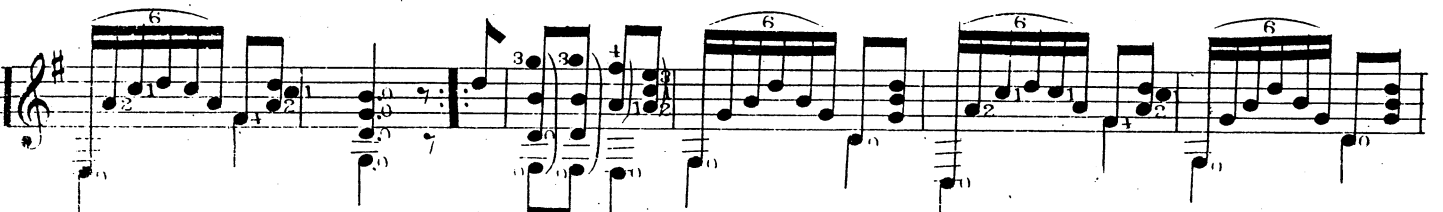
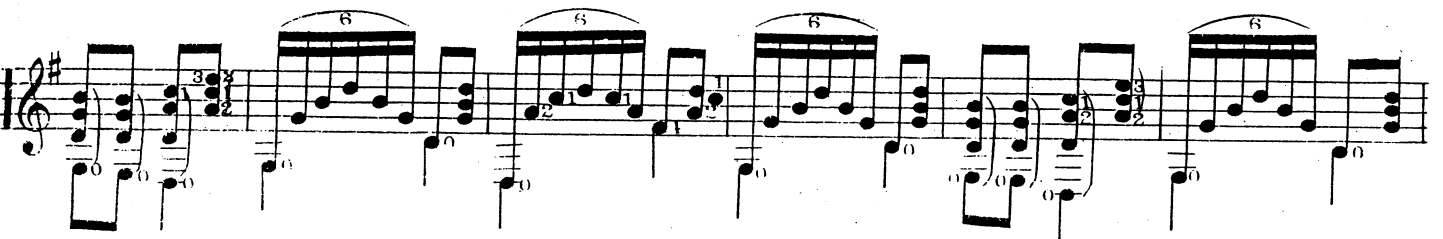
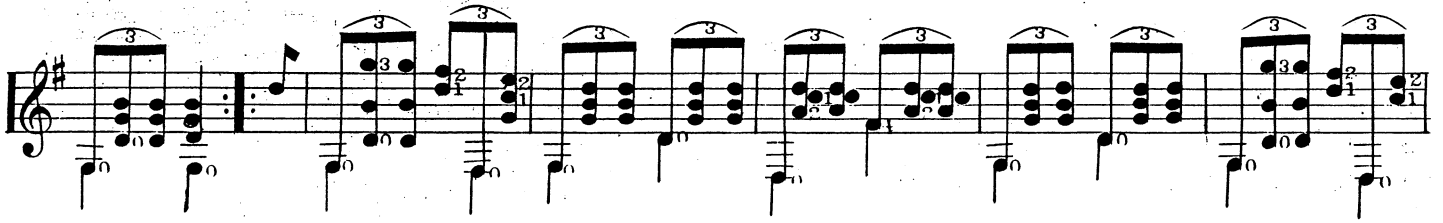
Fifth musical staff, continuing the triplet patterns with markings 12 through 17. The bass line shows some variation in chord voicings.

Sixth musical staff, concluding the piece with final triplet markings (18-23) and fingerings. The bass line ends with simple chords.

THE AMERICAN GUITARIST.

SWEET HOME VARIATIONS. AMERICAN MODE.

CONTINUED.



THE AMERICAN GUITARIST.

SWEET HOME VARIATIONS. AMERICAN MODE.
CONCLUDED.

HAR. 12. F. ... HAR. 12. F. ...
10. F. 13. F.

10. F. ... HAR. 12. F. ... HAR. 12. F. ... 10. F. ... HAR. 12. F. ...

17. F. 15. F. 13. F. ... HAR. 12. F. ... 10. F. ... HAR. 12. F. ... HAR. 12. F. ...

10. F. ... HAR. 12. F. ... 10. F. 13. F. HAR. 12. F. ... 10. F. ... HAR. 12. F. ...

10. F. 13. F. HAR. 12. F. ... 10. F. ... HAR. 12. F. ... 17. F. ... 15. F. 13. F. HAR. 12. F. ...

10. F. ... HAR. 12. F. ... 17. F. ... 15. F. ... 13. F. HAR. 12. F. ... 10. F. ... HAR. 12. F. ...

17. F.