

SWEET HOME

WITH 9 ORIGINAL VARIATIONS

IN THE KEY OF G. MAJOR, AMERICAN
MODE.
COMPOSED FOR THE GUITAR.

—BY—

J. C. SMITH (ART)

GUITAR. ————— GUITAR.

SWFET HOME. IN G. 9. VARIATIONS. 60	THE AMERICAN WEDDING MARCHING. 35
PAVAN OF THE MIDNIGHT STARS. TRIO. 75	AU REVOIR POLKA. IN A. D. G. C & A. MIN. 40
RAINBOWS OF GOLD. IN F. TRIO. 75	DIANA'S FANTASIA. IN G. DUET. 50
SAPPHO'S REVERIE. IN E. 30	THE AMERICAN FANTASIA IN E. 100
GREENVILLE VARIATIONS. IN E. DUO. 75	THE SPANISH HARMONIC DANCE. IN G. 30
TRYPHENA WALTZ. IN C. DUET. 40	THE SILVER WAVE POLKA. IN A & E. 35
DANCE OF THE FAIRIES. IN A. 30	LIGHTNING POLKA. IN C & A. MIN. DUO. 50
THE CELEBRATED HARMONIC WALTZ. D. 35	STORM KING POLKA. IN G & E MINOR. 30
THE STORM CLOUD WALTZ. IN G. 80	FREDRICK SCHOTTISCHE. IN G. 30
POSITION WALTZ. IN A. DUET. 40	ROSA LEE VARIATIONS. IN G. 30
TROUBADOUR'S RETURN. IN E. 50	ALPHONSINE WALTZ. IN G. 30
HIPPOCAMPUS MARCH. IN C. 30	NELLIE QUICKSTEP. IN D. 30
GRAND OPERA MARCH IN G. 50	VALPARAISO WALTZ. IN A. 25
TROUBADOURIAN SERENADE IN E. 30	ASSYRIANNA DUET. WALTZ. IN A. 40
LOVE'S DREAM WALTZ. IN D & A. 25	SWEET HOME. IN C. 30
ARCADOME COTILLION. IN A. 30	TRYPHENA POLKA. IN D & B. MIN. 30



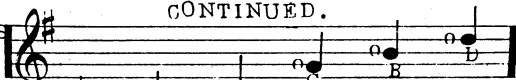
THE AMERICAN GUITARIST.

SWEET HOME VARIATIONS. AMERICAN MODE.
CONTINUED.

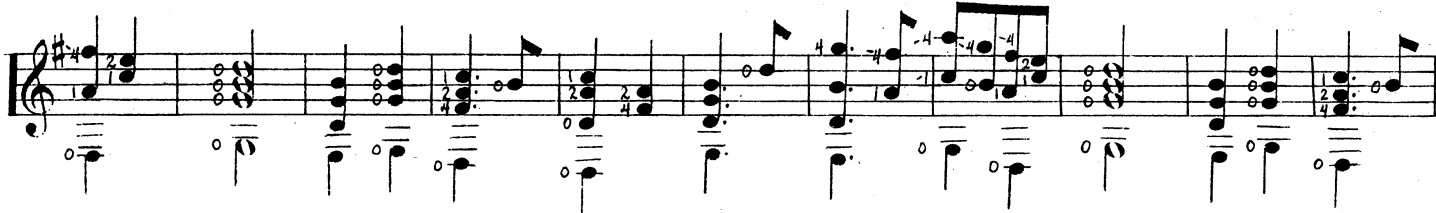
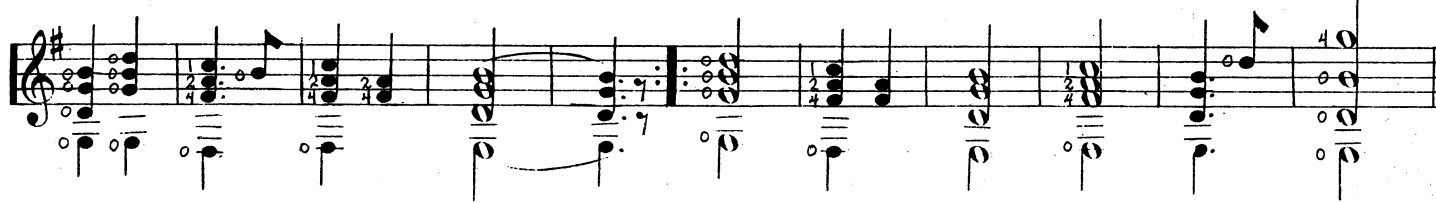


VARIATIONS COMPOSED BY

TUNE THUS



J.C. SMITH.



THE AMERICAN GUITARIST.

SWEET HOME VARIATIONS. AMERICAN MODE.

CONTINUED. c2

7th

First musical staff, featuring a treble clef, a key signature of one sharp (F#), and a 3/4 time signature. The staff contains a sequence of chords and melodic lines. A sixteenth-note triplet is marked with a '6' above it. The piece concludes with a double bar line.

Second musical staff, continuing the piece with similar chordal and melodic patterns. It includes several triplet markings and ends with a double bar line.

Third musical staff, featuring a variety of chordal textures and melodic runs. It includes a triplet marked with a '3' and ends with a double bar line.

Fourth musical staff, characterized by dense chordal passages and melodic lines. It includes a triplet marked with a '3' and ends with a double bar line.

Fifth musical staff, featuring a mix of chordal and melodic elements. It includes a triplet marked with a '3' and ends with a double bar line.

Sixth musical staff, concluding the piece with a series of chords and melodic lines. It includes a triplet marked with a '3' and ends with a double bar line.

THE AMERICAN GUITARIST.

SWEET HOME VARIATIONS. AMERICAN MODE.

CONTINUED.

