

# SWEET HOME

WITH 9 ORIGINAL VARIATIONS

IN THE KEY OF G. MAJOR. AMERICAN  
MODE.  
COMPOSED FOR THE GUITAR.

—BY—

## J. C. SMITH (ART)

GUITAR. ————— © ————— GUITAR.

SWFET HOME. IN G. 9. VARIATIONS. 60	THE AMERICAN WEDDING MARCHING. 35
PAVAN OF THE MIDNIGHT STARS. TRIO. 75	AU REVOIR POLKA. IN A. D. G. G & A. MIN. 40
RAINBOWS OF GOLD. IN F. TRIO. 75	DIANA'S FANTASIA. IN G. DUET. 50
SAPPHO'S REVERIE. IN E. 30	THE AMERICAN FANTASIA IN E. 100
GREENVILLE VARIATIONS. IN E. DUO. 75	THE SPANISH HARMONIC DANCE. IN G. 30
TRYPHENA WALTZ. IN C. DUET. 40	THE SILVER WAVE POLKA. IN A & E. 35
DANCE OF THE FAIRIES. IN A. 30	LIGHTNING POLKA. IN C & A. MIN. DUO. 50
THE CELEBRATED HARMONIC WALTZ. D. 35	STORM KING POLKA. IN G & E MINOR. 30
THE STORM CLOUD WALTZ. IN G. 80	FREDRICK SCHOTTISCHE. IN G. 30
POSITION WALTZ. IN A. DUET. 40	ROSA LEE VARIATIONS. IN G. 30
TROUBADOUR'S RETURN. IN E. 50	ALPHONSINE WALTZ. IN G. 30
HIPPOCAMPI MARCH. IN C. 30	NELLIE QUICKSTEP. IN D. 30
GRAND OPERA MARCH IN G. 50	VALPARAISO WALTZ. IN A. 25
TROUBADOURIAN SERENADE IN E. 30	ASSYRIANNA DUET. WALTZ. IN A. 40
LOVE'S DREAM WALTZ. IN D & A. 25	SWEET HOME. IN C. 30
ARCADOME COTILLION. IN A. 30	TRYPHENA POLKA. IN D & B. MIN. 30



# THE AMERICAN GUITARIST.

SWEET HOME VARIATIONS. AMERICAN MODE.  
CONTINUED.



VARIATIONS COMPOSED BY

TUNE THUS

J.C. SMITH.

12

# THE AMERICAN GUITARIST.

SWEET HOME VARIATIONS. AMERICAN MODE.

CONTINUED. c2

7th

First musical staff, featuring a treble clef, a key signature of one sharp (F#), and a 2/4 time signature. The staff contains a sequence of chords and melodic lines. A large bracket labeled '6' spans the first four measures. Subsequent measures contain triplets and other rhythmic patterns.

Second musical staff, continuing the piece with similar rhythmic and melodic motifs, including triplets and chordal structures.

Third musical staff, featuring a variety of chordal textures and melodic runs, with some measures containing triplets.

Fourth musical staff, characterized by a series of chords with melodic lines above them, some marked with numbers like 6, 7, 8, 9, 10, 11, 12, 13, 14, 15, 16, 17, 18, 19, 20, 21, 22, 23, 24, 25, 26, 27, 28, 29, 30, 31, 32, 33, 34, 35, 36, 37, 38, 39, 40, 41, 42, 43, 44, 45, 46, 47, 48, 49, 50, 51, 52, 53, 54, 55, 56, 57, 58, 59, 60, 61, 62, 63, 64, 65, 66, 67, 68, 69, 70, 71, 72, 73, 74, 75, 76, 77, 78, 79, 80, 81, 82, 83, 84, 85, 86, 87, 88, 89, 90, 91, 92, 93, 94, 95, 96, 97, 98, 99, 100.

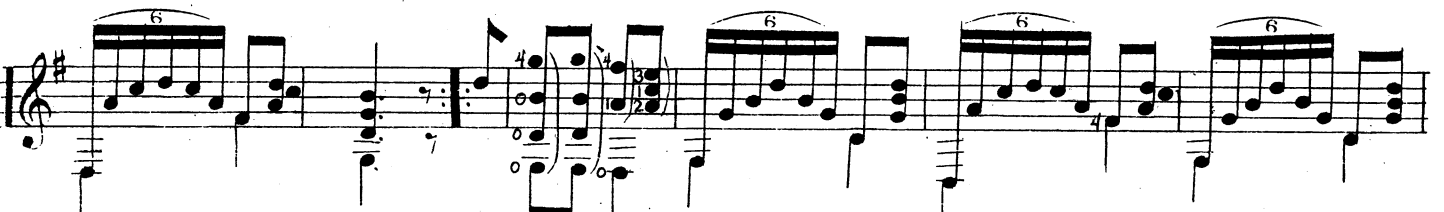
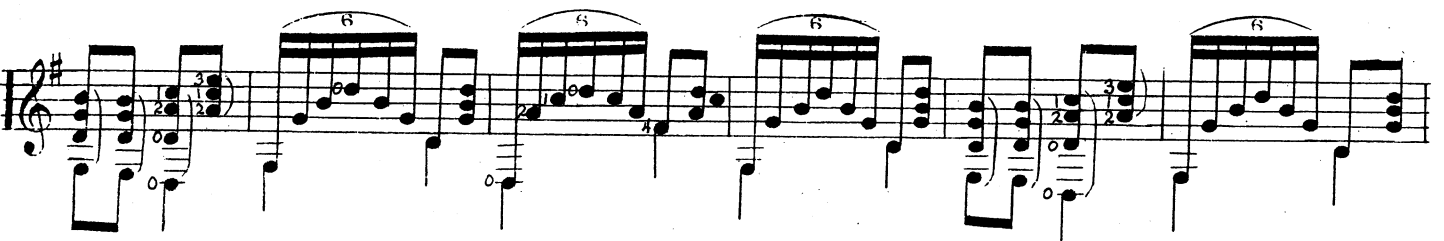
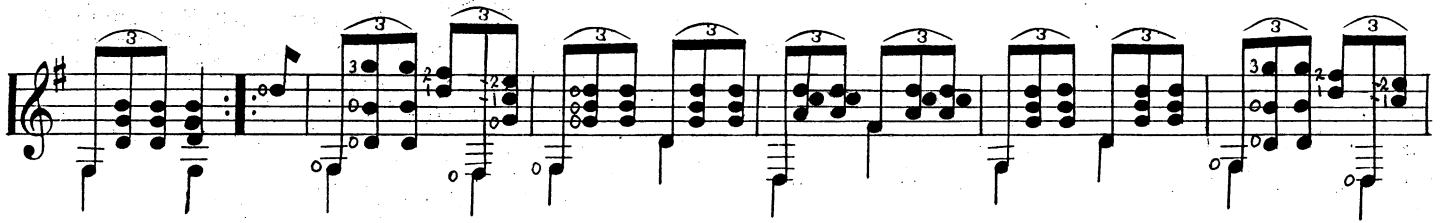
Fifth musical staff, continuing the sequence of chords and melodic lines, with some measures containing triplets.

Sixth musical staff, featuring a series of chords with melodic lines above them, some marked with numbers like 6, 7, 8, 9, 10, 11, 12, 13, 14, 15, 16, 17, 18, 19, 20, 21, 22, 23, 24, 25, 26, 27, 28, 29, 30, 31, 32, 33, 34, 35, 36, 37, 38, 39, 40, 41, 42, 43, 44, 45, 46, 47, 48, 49, 50, 51, 52, 53, 54, 55, 56, 57, 58, 59, 60, 61, 62, 63, 64, 65, 66, 67, 68, 69, 70, 71, 72, 73, 74, 75, 76, 77, 78, 79, 80, 81, 82, 83, 84, 85, 86, 87, 88, 89, 90, 91, 92, 93, 94, 95, 96, 97, 98, 99, 100.

# THE AMERICAN GUITARIST.

SWEET HOME VARIATIONS. AMERICAN MODE.

CONTINUED.



# THE AMERICAN GUITARIST.

SWEET HOME VARIATIONS. AMERICAN MODE.  
CONCLUDED.

C10 H12 C10 H12 C10 H12

17th H12 C10 H12 H12

C10 H12 C10 H12 H12 17th H12

C10 H12 H12 17th H12 C10 H12 H12 17th