

SPRING SONG.

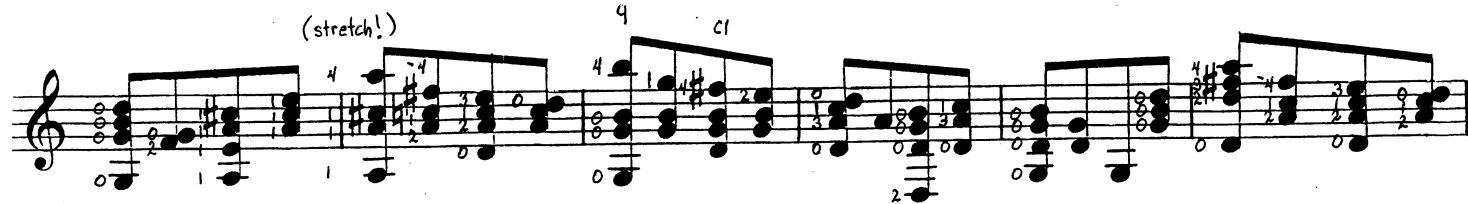
MENDELSSOHN.

Tune the Guitar Saxton System thus:



Arr. by J. HENRY BRADY.

Andante grazioso.



First musical staff with treble clef, showing a sequence of chords and melodic lines. Fingering numbers 0, 2, 1, 0, 1, 0 are visible below the staff.

Second musical staff with treble clef, featuring a *accel.* marking. Chord labels C2, C5, and C1 are present above the staff.

Third musical staff with treble clef, featuring an *a tempo* marking. Chord labels C1, C2, and C5 are present above the staff.

Fourth musical staff with treble clef, showing complex chordal textures. Chord labels C1 and C1 are present above the staff.

Fifth musical staff with treble clef, including a *C5 (stretch!)* label. Chord labels C7 and C12 are also present above the staff.

Sixth musical staff with treble clef, featuring various chordal patterns. Chord labels C12, C1, and C1 are present above the staff.

Seventh musical staff with treble clef, showing intricate chordal and melodic passages.

Eighth musical staff with treble clef, concluding the piece with a final chordal structure. Chord label C2 is present above the staff.