

— THE —
TROUBADOUR.
 — A —

COLLECTION OF CHOICE MELODIES.

FOR THE

GUITAR.

ALICE WALTZ.	CONNER.30.	MORNING PARADE MARCH.	BOLLMAN.30.
AN ALEXIS. Var:	BOLLMAN.35.	MOUNTAIN SPRING POLKA.	BOLLMAN.30.
CLOCHETTE DU VILLAGE.	WALLER.40.	RISTORI SCHOTTISCH.	FORD.30.
CONTENTMENT SCHOTTISCH.	FORD.30.	ROSE WALTZ.	CONNER.30.
CRICKET POLKA.	PEERS.25.	SPANISH FANDANGO.	FORD.35.
DESIRE WALTZ.	BOLLMAN.30.	SPANISH DANCE.	25.
EVENING PARADE MARCH.	BOLLMAN.30.	SUMMER BREEZES WALTZ.	BOLLMAN.30.
FAIRY POLKA.	FORD.30.	SWEET VIOLET POLKA.	FORD.30.
FLORENCE WALTZ.	FORD.30.	SWISS AIR. with Vars:	BOLLMAN.30.
FOND HEARTS WALTZ.	BOLLMAN.30.	TRIUMPHAL MARCH.	WALLER.30.
GREEK MARCH.	BOLLMAN.25.	TWILIGHT POLKA.	BOLLMAN.30.
HARMONIC WALTZ.	FORD.30.	WINTER EVENING POLKA.	FORD.30.
HOME SWEET HOME. Var:	CONNER.30.	WEDDING WALTZ.	BOLLMAN.15.
LADIES MARCH.	FORD.30.	ALEXANDER WALTZ.	BOLLMAN.15.
LAURA WALTZ.	BOLLMAN.25.	GREEK WALTZ.	BOLLMAN.15.
LIFE IS A DANCE WALTZ.	BOLLMAN.25.	GREEK MARCH.	BOLLMAN.15.
PEARL MENUËTTO.	BOLLMAN.25.		
CONVENT BELLS (Easy) Arr.by W.FODEN.	30.		
CONVENT BELLS (Difficult)» » » »	40.		

PUBLISHED BY

H. Bollman & Sons.

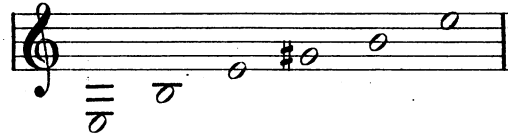
ST. LOUIS, MO.

GREEK MARCH.

Arranged for GUITAR

by H. BOLLMAN.

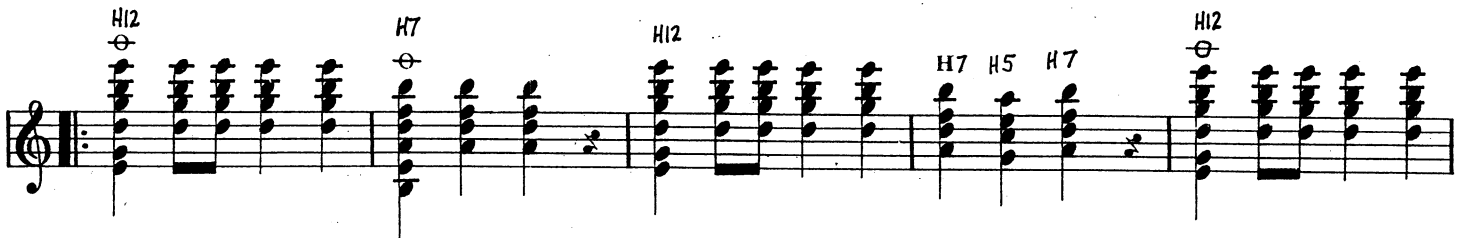
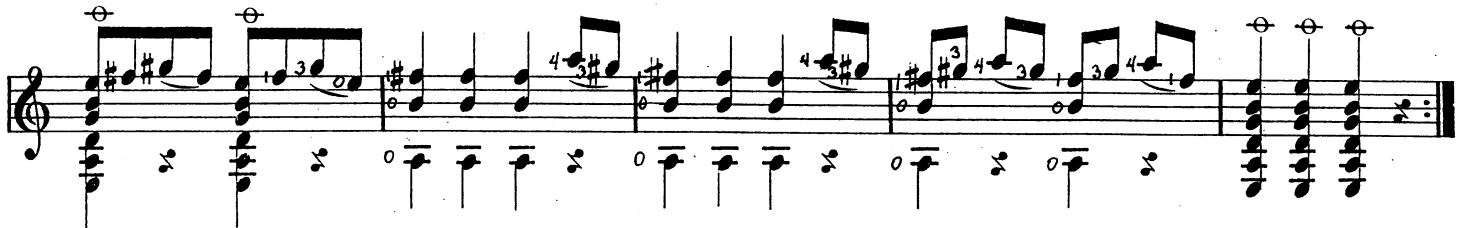
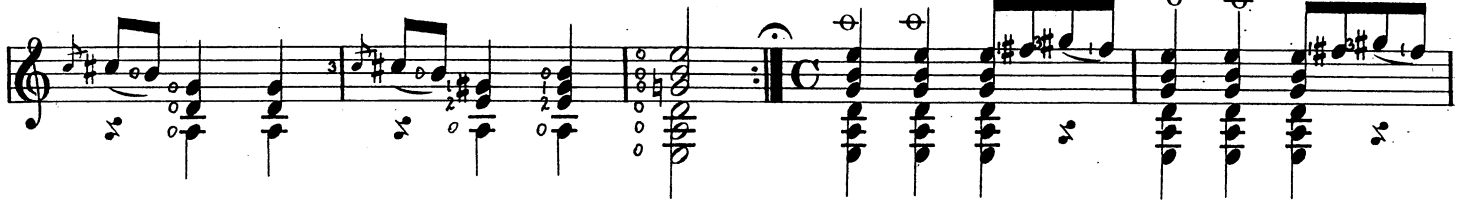
Tune Guitar.



Waltz.



March.

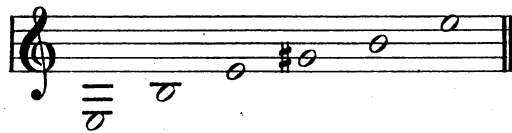


GREEK WALTZ.

Arranged for GUITAR

by H. BOLLMAN.

Tune Guitar.



C4 C2 C4 C6 H7 H12 H7 H12 C6 H7 H12 H12

1. 2. Fine. 1. 2. Da Capo al Fine.